

Review Questions - Demo Exam

1. Which of the following network media does AppleTalk support? (Choose all that apply.)
 - a. Ethernet
 - b. PhoneNet
 - c. FDDI
 - d. Frame Relay
 - e. Token Ring
 - f. ATM

2. You have just connected several new workstations to a 10Base5 segment. Now none of the network nodes are able to communicate with each other. What is most likely the cause?
 - a. There are 93 clients on the segment.
 - b. The cable segment is 800 meters.
 - c. The segment is terminated using 50 Ohm terminators.
 - d. Some MAUs are more than 2.5 meters apart.

3. You have a small 100BaseTX network running TCP/IP with 30 clients connected to a 36-port switch. You want to create a separate subnet for the Management department. What should you do?
 - a. Create VLANs
 - b. Add a bridge
 - c. Add a switch
 - d. Add a hub
 - e. Add a collision domain

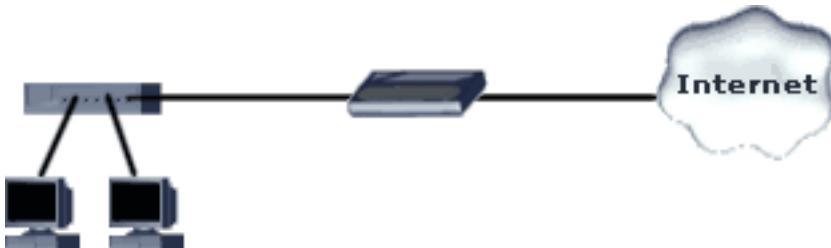
4. You have configured a workstation to automatically obtain IP addressing information from a DHCP server. After you configured and rebooted the client, you check the IP configuration and notice the workstation is configured with an IP address of 169.254.0.10. What has most likely happened?
 - a. APIPA assigned an IP address to the workstation.
 - b. DHCP assigned an IP address to the workstation.
 - c. The workstation still uses a manually assigned IP address.
 - d. There is an IP address conflict caused by a wrong entry in the host file.

5. Which of the following do NOT provide fault tolerance? (Choose 2.)
 - a. UPS
 - b. RAID 1
 - c. Mirrored servers
 - d. RAID 0
 - e. Tape backups

6. Which of the following are true regarding ICS? (Choose all that apply.)

- a. ICS can act as a DNS proxy.
- b. ICS device can act as DHCP server.
- c. A NAT device issues IP addresses from the APIPA range.
- d. A NAT device issues IP addresses from the 192.168.0.0-192.168.0.255 range.
- e. ICS can be used to cache web documents.

7. Take a look at the following network diagram.



Both clients cannot connect to the Internet but can communicate with each other. You checked the link indicators and noticed only 2 ports on the hub are lit. Which of the following is probably causing the problem?

- a. Hub
- b. xDSL router
- c. WorkstationA
- d. WorkstationB
- e. ISP
- f. incorrect TCP/IP configuration

8. You want to connect two remote IPX/SPX LANs by using the Internet. Which of the following protocols should you implement?

- a. IPX RIP
- b. PPTP
- c. L2TP
- d. IPsec
- e. SAP

9. Take a look at the following network diagram:



HostX cannot communicate with HostY. What utility should you use to determine which router is causing the problem?

- a. ipconfig
- b. winipcfg
- c. ping
- d. tracert
- e. arp

10. Which of the following are true regarding ISDN? (Choose all that apply.)

- a. Call setup is faster compared to traditional analogous modems.
- b. ISDN is faster than using traditional analogous modems.
- c. ISDN is an example of a packet-switching network.
- d. ISDN runs over existing traditional copper phone wiring.

Answers to Review Questions - Demo Exam

Question 1. Correct answers: a, b, c, e. At the Physical and Data Link layer several specifications are defined to allow AppleTalk to run over several network types with different media-access technologies. EtherTalk allows AppleTalk to run over Ethernet, TokenTalk allows AppleTalk to run over Token Ring, FDDITalk allows AppleTalk to run over FDDI, and LocalTalk is Apple's own media-access technology.

Question 2. Correct answer: b. The maximum cable segment in 10Base5 is 500 meters.

Question 3. Correct answer: a. Many switches provide the capability of creating Virtual LANs. This will allow you to create a separate subnet for the Management department, without additional hardware.

Question 4. Correct answer: a. If the client is configured with an IP address of 169.254.x.x, it's most likely that the workstation could not reach the DHCP server, and assigned itself an IP address using Automatic Private IP Addressing (APIPA).

Question 5. Correct answers: d, e. RAID 0 is also known as stripe set, and is merely a method of combining hard disks to allow for larger volumes, it does not provide fault tolerance. Tape backups are used to restore data after a failure (fault) has occurred.

Question 6. Correct answers: a, b, d. ICS is like a stripped version of NAT. It does act as a DHCP server and DNS proxy but only one fixed range of addresses can be used to issue to internal hosts (192.168.0.x).

Question 7. Correct answer: b. Since both clients can communicate with each other, the hub and the workstations cannot cause the problem. The link indicator not lit on the hub must be for the port where the xDSL router is connected to.

Question 8. Correct answer: b. The Point-to-Point Tunneling Protocol (PPTP) can be used to tunnel IPX (and other protocols) over a secure IP connection through a public network.

Question 9. Correct answer: d. This is a typical situation in which the tracert utility should be used. You could ping the routers and hostY all individually, but the tracert can accomplish the same thing in one command. In this case you would run tracert hostY on hostX.

Question 10. Correct answers: a, b, d. Setting up an analog modem connection can take up to a minute, while ISDN needs only a couple of seconds. ISDN provides data rates up to 64K for one B-channel compared to the 56K maximum of analog modems. ISDN does not require special cabling, it runs over traditional copper phone wiring.